



**PLASMACEM**

NATURAL LOOKING BEAUTIFUL CONCRETE



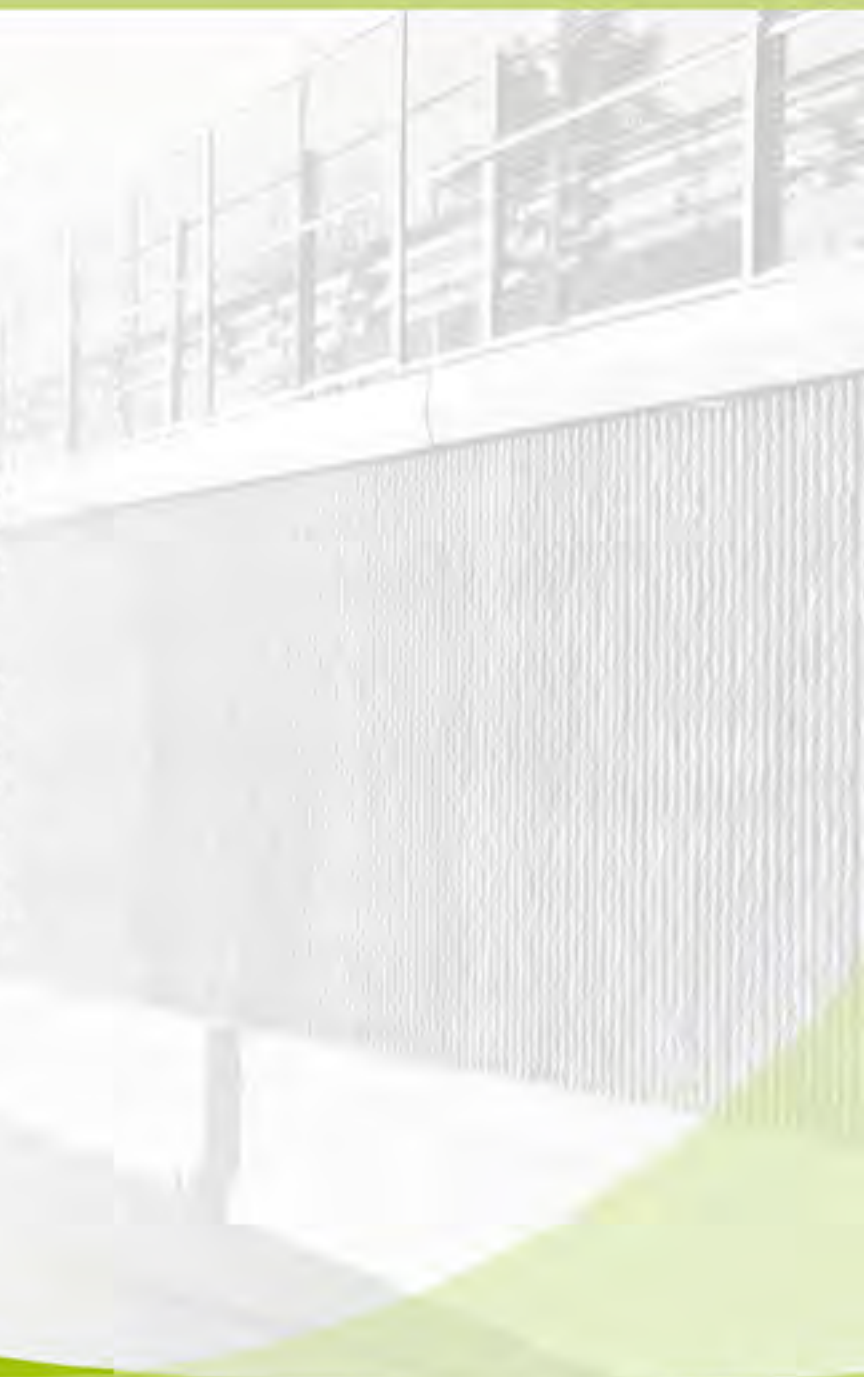
## Matrici **PLASMACEM**



## Natural looking beautiful concrete

**PLASMACEM** was founded in 2006 in the north of Italy, Vicenza, based on the experience gained in working with scenery elements for major amusement parks, with the aim to create a low-environmental-impact formwork system. This aim was achieved with the production of form liners (matrices) manufactured under our exclusive patent, both for use on construction sites and for creating pre-cast elements

The different types of material used to create the matrices allow for between 3 and 100 reuses; in addition, our research and development department is studying and testing increasingly cutting-edge materials, specifically formulated for each type of application, in order to provide and ensure a quality **customized product** for constructions and pre-caster. Plasmacem is also able to produce **large matrices** for concrete works of architectural significance, without unpleasant interruption joints.





**ESSEFLEX**  
form liners for large panels



Code: **ESX**

- form liners in material derived from silicon at noble catalysis (FLEXIBLE).
- 100 reuses.
- no size limit.
- can be used without fixing.
- magnetic anchoring possible on pre-cast benches.
- form liners also suitable for columns. (see page 37).

**FLEX**  
form liner for pre-casting



Code: **FLX**

- form liners in sintered polyurethane (FLEXIBLE).
- 50 - 100 reuses.
- can be used without fixing.
- magnetic anchoring possible on pre-cast benches.
- form liners also suitable for columns (see page 37).

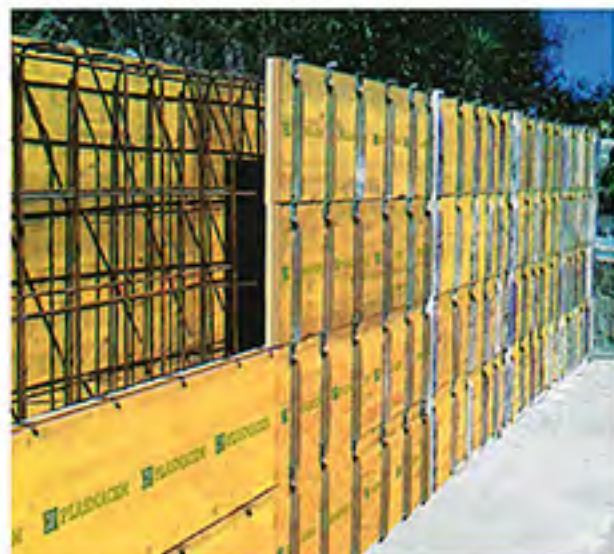
**STONECLEAR**  
form liner for casting in situ



Code: **STR - SVM**

- form liners in cyclic density polyurethane, fortified by synthetic resins.
- 3 - 100 reuses.
- fixing to formworks with glue or screws.
- fixing to plastic formworks with magnets.
- improved pull-out assembly.

**mano**<sup>®</sup>  
self-bearing form liner



Code: **MANO**

- shaped panel for casting with high-density polyurethane fortified by resins.
- shaped panel with SOFT sintered polyurethane for high section finishes and with undercuts.
- 100 or more reuses.
- available in four standard finishes, as well as in several customized finishes.
- also suitable for climbing systems.



## Form liners for architectural concrete by PLASMACEM

Using form liners for architectural concrete allows you to:

- Create patterns on exposed concrete walls.
- Adapt buildings to meet all aesthetic needs.
- Obtain even surfaces in a simple and cost-effective manner, thanks to the play of light and shadow that can be generated.

Application range

- Building and civil engineering.
- Precast concrete.
- Cast in place concrete.

The most important parameters to bear in mind are:

- The precise number of form liners to assemble.
- The design to comply with (continuous mounting or positioning of joints).
- Dimensions adapted to the formwork to be used.
- Type of form liner suited to the number of expected reuses and the field of use.

For casting in situ, the form liners can be secured to the formwork in three ways:

- with glue applied to a clean, grease-free formwork.
- mechanically, using screws (8\10 screws\m2).
- with magnets (for plastic formworks).

For pre-casting, the form liners can be secured in two ways:

- with glue.
- with magnets .
- **It is also possible to use the form liners without securing them to the metal benches.**

To achieve the best results, we recommend that you:

- Use class S4 concrete and a suitable superplasticizer.
- Use a concrete recipe suitable for exposed surfaces.
- Store in a dry place protected against direct exposure to frost, sun, and rain.

**The form liners by Plasmacem are delivered to size taking into account the information on construction site requirements. The dimensions of the products delivered are guaranteed with a tolerance of  $\pm 0.5\%$ . The concrete release must take place within 24 hours of the casting.**

Legend of the pictograms



Form liner joining on 4 sides | Form liner joining top/bottom | Form liner joining right/left | Form liner that cannot be joined

*This warning has been provided based on the results of on-site tests. This information does not constitute a guarantee by us. Therefore, preliminary tests should be conducted in order to check whether the application conditions have been complied with. Users requiring clarification or information are welcome to contact our technical office for assistance. These specifications may be changed without notice.*



## WARNINGS

Using a 40 grit sandpaper, clean the back side matrix to create porosity in order to ensure a good grip between glue and matrix.



To increase the adhesive effect, nebulize water as soon as the glue will be applied.

## WARNINGS

Before concreting, spread the release oil "Plasmosil" in order to ensure a whole oiled form liner surface (30 sqm/l yield).



Trim the matrices using an appropriate cutter. Once cut the surface it will be enough to bend the trimmed line to remove the unnecessary part.





## 0211 Adda



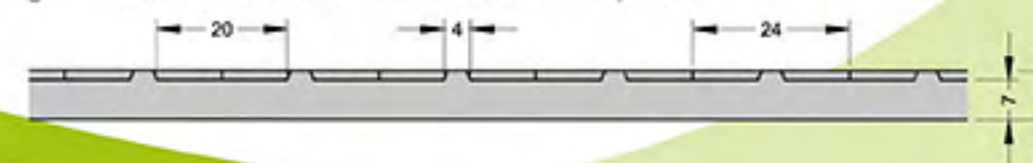
10 castings Str\0211 - Adda Dimensions L. 1.000 x H. 1.000 mm  
 50/100 castings Fix\0211 - Adda Dimensions L. 1.000 x H. 3.000 mm  
 100 castings Esx\0211 - Adda Dimensions on request



## 0162 Antiskid



10 castings Str\0162 - Antiskid Dimensions L. 1.000 x H. 2.000 mm  
 50/100 castings Fix\0162 - Antiskid Dimensions L. 1.000 x H. 3.000 mm  
 100 castings Esx\0162 - Antiskid Dimensions on request

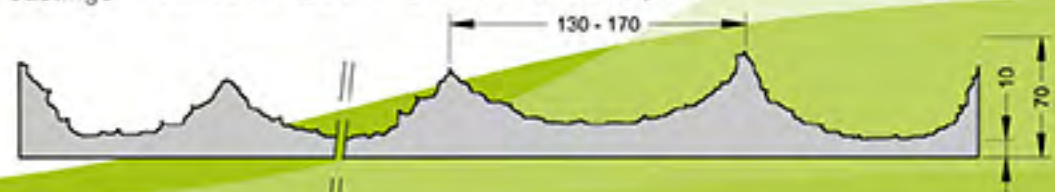




## 0070 Bark



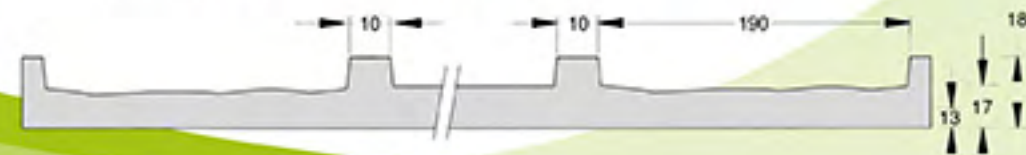
10 castings Str\0070 - Bark Dimensions L. 1.000 x H. 2.000 mm  
 50/100 castings Fix\0070 - Bark Dimensions L. 1.000 x H. 3.000 mm  
 100 castings Esx\0070 - Bark Dimensions on request



## 0904 Beton

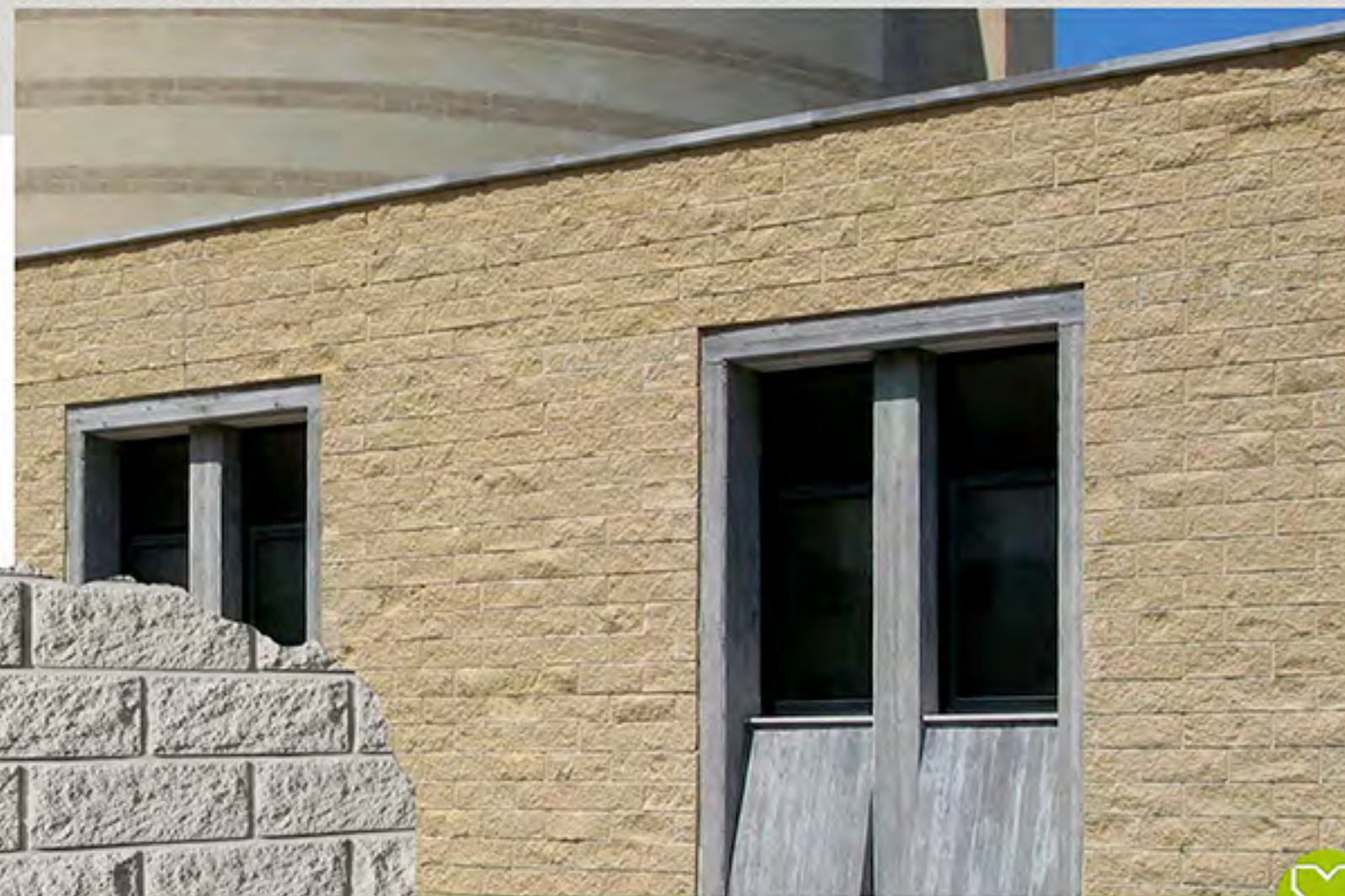


10 castings Str\0904 - Beton Dimensions L. 1.000 x H. 1.000 mm  
 50/100 castings Fix\0904 - Beton Dimensions L. 500 x H. 3.000 mm  
 100 castings Esx\0904 - Beton Dimensions on request





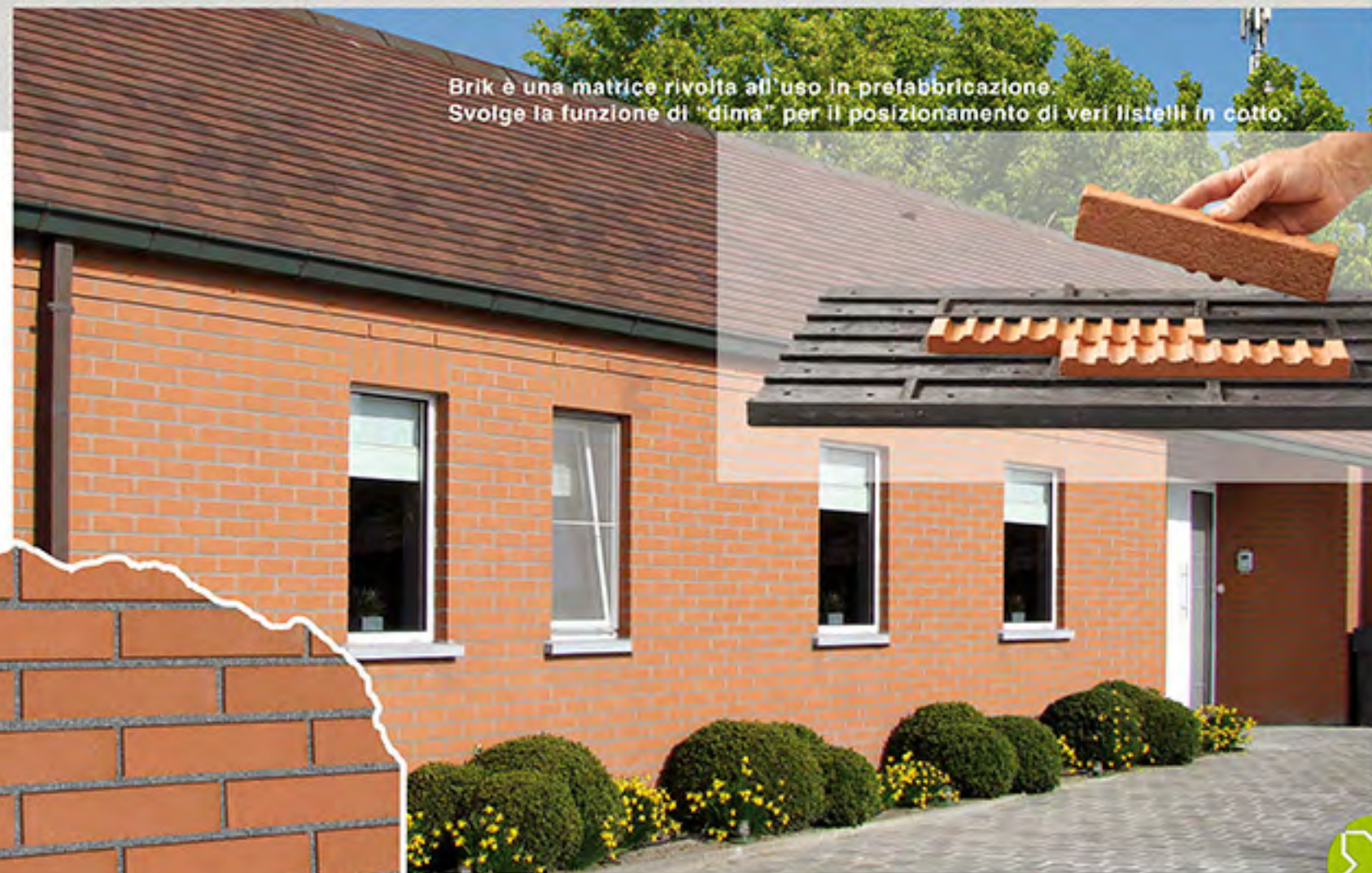
## 0509 Blockstone



10 castings Str\0509 - Blockstone Dimensions L. 1.000 x H. 1.000 mm  
 50/100 castings Fix\0509 - Blockstone Dimensions L. 1.000 x H. 3.000 mm  
 100 castings Esx\0509 - Blockstone Dimensions on request



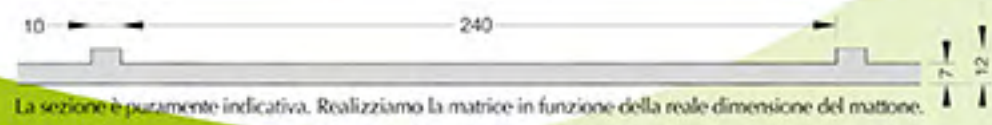
## 0101 Brik



Brik è una matrice rivolta all'uso in prefabbricazione. Svolge la funzione di "dima" per il posizionamento di veri listelli in cotto.



10 castings Svm\0101 - Brik Dimensions L. 1.000 x H. 1.000 mm  
 50/100 castings Fix\0101 - Brik Dimensions L. 1.000 x H. 3.000 mm  
 100 castings Esx\0101 - Brik Dimensions on request



La sezione è puramente indicativa. Realizziamo la matrice in funzione della reale dimensione del mattone.



## 0883 Buomb



10 castings	Str\0883 - Buomb	Dimensions L. 1.000 x H. 1.000 mm
50/100 castings	Fix\0883 - Buomb	Dimensions L. 1.000 x H. 3.000 mm
100 castings	Esx\0883 - Buomb	Dimensions on request



## 0606 Cannulato



10 castings	Str\060 - Cannulato	Dimensions L. 500 x H. 2.000 mm
50/100 castings	Fix\0606 - Cannulato	Dimensions L. 500 x H. 3.000 mm
100 castings	Esx\0606 - Cannulato	Dimensions on request





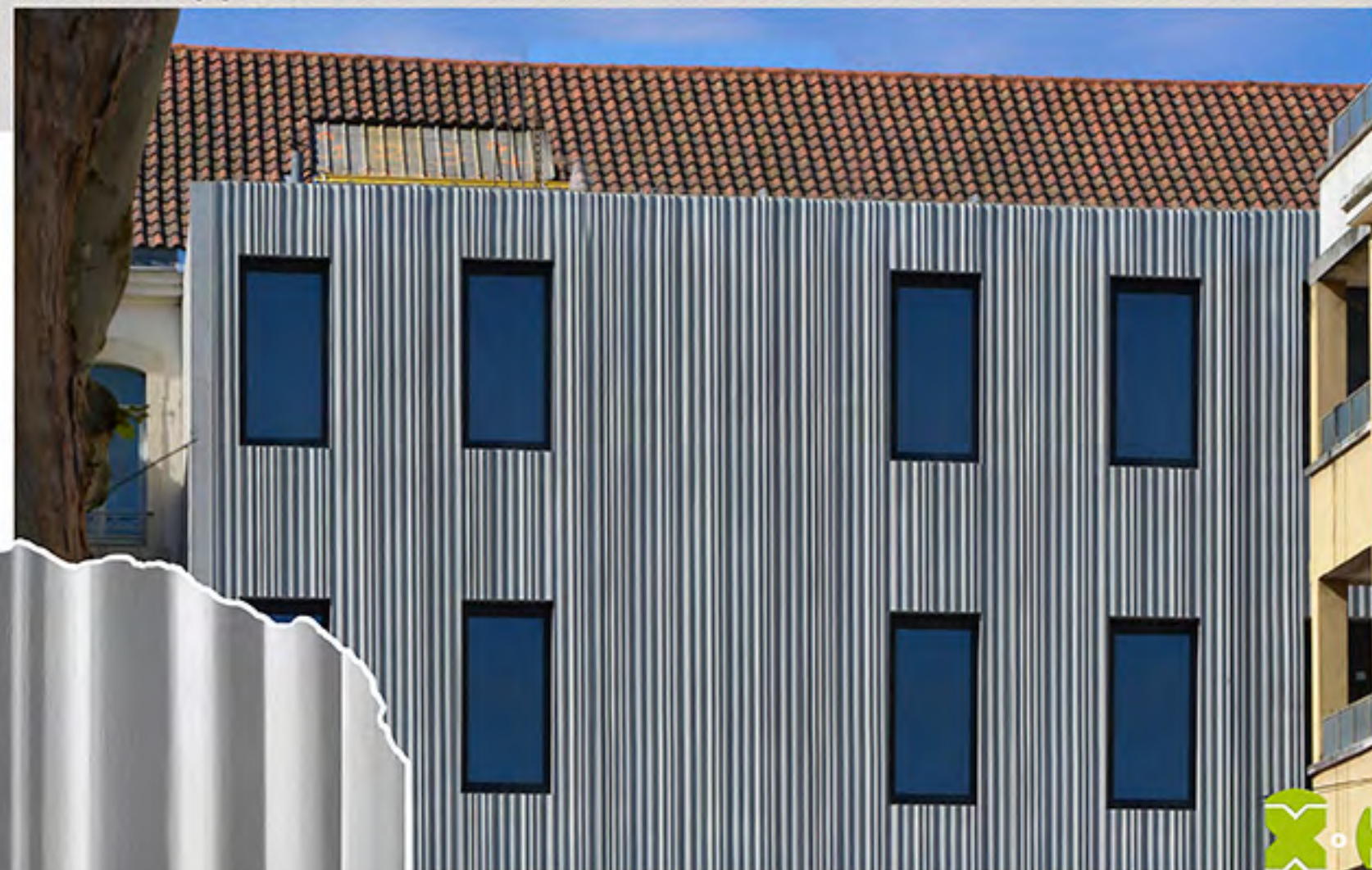
## 0889 Diamond



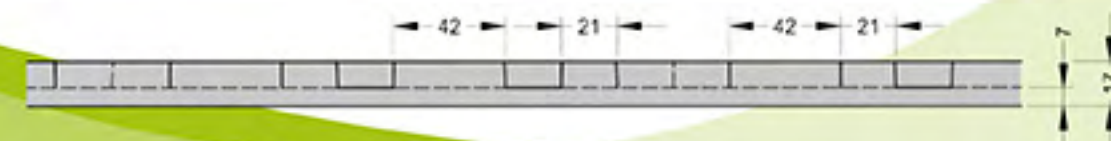
10 castings Str\0889 - Diamond Dimensions L. 1.000 x H. 1.000 mm  
 50/100 castings Fix\0889 - Diamond Dimensions L. 1.000 x H. 3.000 mm  
 100 castings Esx\0889 - Diamond Dimensions on request



## 0215 Drappo



10 castings Str\0215 - Drappo Dimensions L. 1.000 x H. 1.000 mm  
 50/100 castings Fix\0215 - Drappo Dimensions L. 1.000 x H. 3.000 mm  
 100 castings Esx\0215 - Drappo Dimensions L. 1.000 x H. 8.000 mm or on request

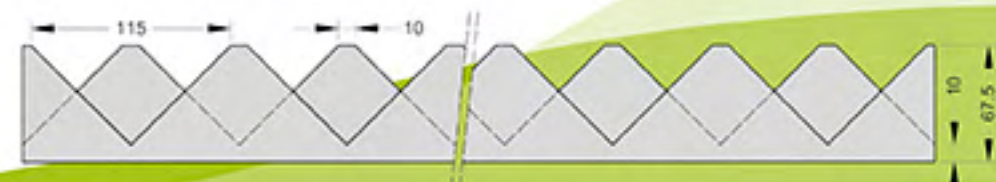




## 0614 Dromb



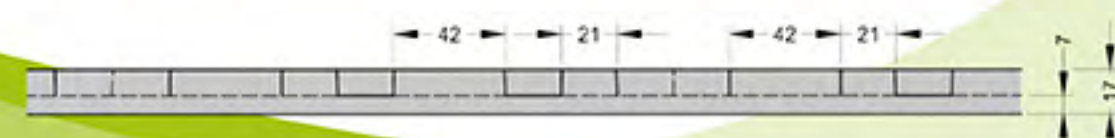
50/100 castings Fix\0614 - Dromb Dimensions L. 325 x H. 3.000 mm



## 0371 Dubai



10 castings Str\0371 - Dubai Dimensions L. 1.000 x H. 1.000 mm  
 50/100 castings Fix\0371 - Dubai Dimensions L. 1.000 x H. 3.000 mm  
 100 castings Esx\0371 - Dubai Dimensions on request





## 0110 Floorgrip



10 castings	Str\0110 - Floorgrip	Dimensions L. 1.000 x H. 2.000 mm
50/100 castings	Fix\0110 - Floorgrip	Dimensions L. 1.000 x H. 3.000 mm
100 castings	Esx\0110 - Floorgrip	Dimensions on request



## 0407 Graffiato



50/100 castings	Fix\0407 - Graffiato	Dimensions L. 945 x H. 1.950 mm
100 castings	Esx\0407 - Graffiato	Dimensions L. 3.000 x H. 1.000 mm or on request





## 0176 Greario



10 castings	Str\0176 - Greario	Dimensions L. 500 x H. 2.000 mm
50/100 castings	Fix\0176 - Greario	Dimensions L. 500 x H. 3.000 mm
100 castings	Esx\0176 - Greario	Dimensions L. 500 x H. 5.000 mm



## 0303 Grecata



10 castings	Str\0303 - Grecata	Dimensions L. 500 x H. 2.000 mm
50/100 castings	Fix\0303 - Grecata	Dimensions L. 500 x H. 3.000 mm
100 castings	Esx\0303 - Grecata	Dimensions on request





## 0303 Grecata B



10 castings	Str\0303 - Grecata B	Dimensions L. 500 x H. 2.000 mm
50/100 castings	Fix\0303 - Grecata B	Dimensions L. 500 x H. 3.000 mm
100 castings	Esx\0303 - Grecata B	Dimensions L. 500 x H. 5.000 mm or on request



## 0559 Istria



10 castings	Str\0559 - Istria	Dimensions L. 500 x H. 2.000 mm
50/100 castings	Fix\0559 - Istria	Dimensions L. 1.000 x H. 1.000 mm
100 castings	Esx\0559 - Istria	Dimensions L. 1.000 x H. 3.000 mm or on request





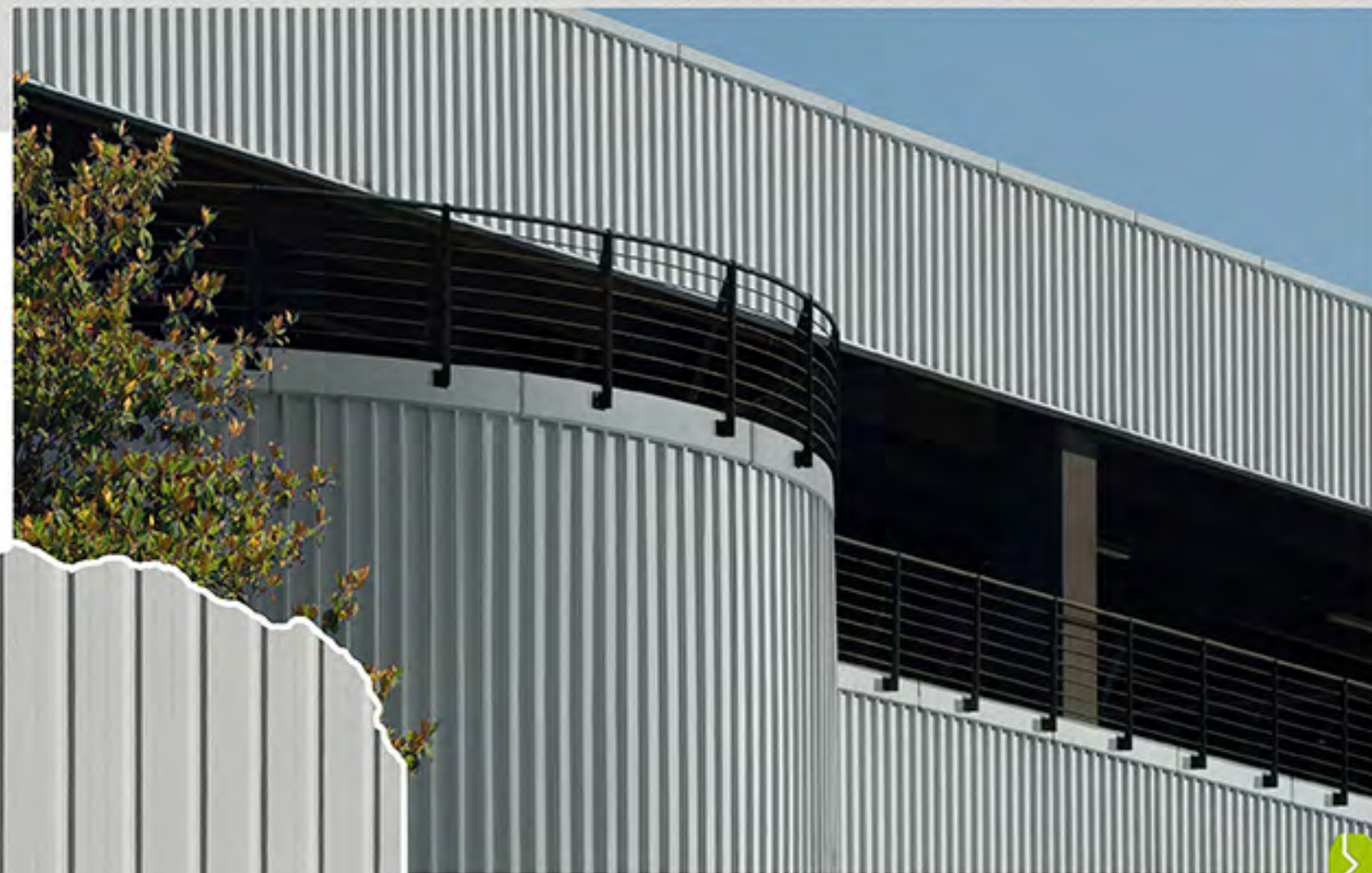
## 0403 Linear



10 castings	Str\0403 - Linear	Dimensions L. 500 x H. 2.000 mm
50/100 castings	Fix\0403 - Linear	Dimensions L. 500 x H. 3.000 mm
100 castings	Esx\0403 - Linear	Dimensions on request



## 0404 Linear 2



10 castings	Str\0404 - Linear 2	Dimensions L. 500 x H. 2.000 mm
50/100 castings	Fix\0404 - Linear 2	Dimensions L. 500 x H. 3.000 mm
100 castings	Esx\0404 - Linear 2	Dimensions on request





## 0920 Logik



10 castings Str\0920 - Logik Dimensions L. 500 x H. 2.000 mm  
 50/100 castings Fix\0920 - Logik Dimensions L. 1.300 x H. 3.000 mm  
 100 castings Esx\0920 - Logik Dimensions L. 1.300 x H. 5.400 mm or on request



## 0141 Mirror



10 castings Str\0141 - Mirror Dimensions L. 2.000 x H. 6.000 mm  
 50/100 castings Esx\0141 - Mirror Dimensions on request

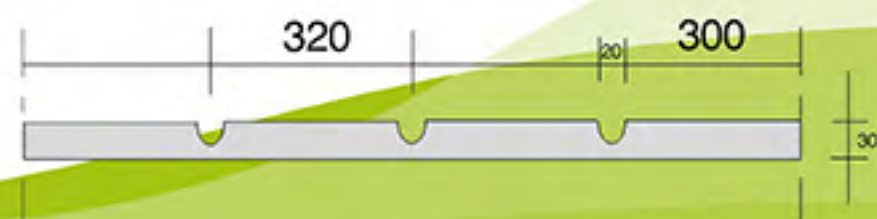




## 0151 Mirror Strips



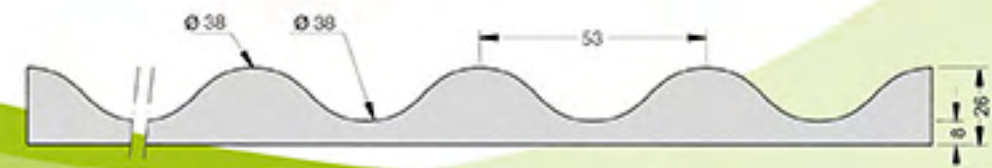
100 castings Esx\0151 - Mirror Strips Dimensions on request



## 0210 Ondulato



10 castings Str\0210 - Ondulato Dimensions L. 530 x H. 2.000 mm  
 50/100 castings Fix\0210 - Ondulato Dimensions L. 530 x H. 3.000 mm  
 100 castings Esx\0210 - Ondulato Dimensions on request





## 0405 Pietraglia



10 castings	Str\0405 - Pietraglia	Dimensions L. 1.000 x H. 2.000 mm
50/100 castings	Fix\0405 - Pietraglia	Dimensions L. 1.000 x H. 3.000 mm
100 castings	Esx\0405 - Pietraglia	Dimensions L. 1.000 x H. 3.000 mm or on request



## 0302 Prun

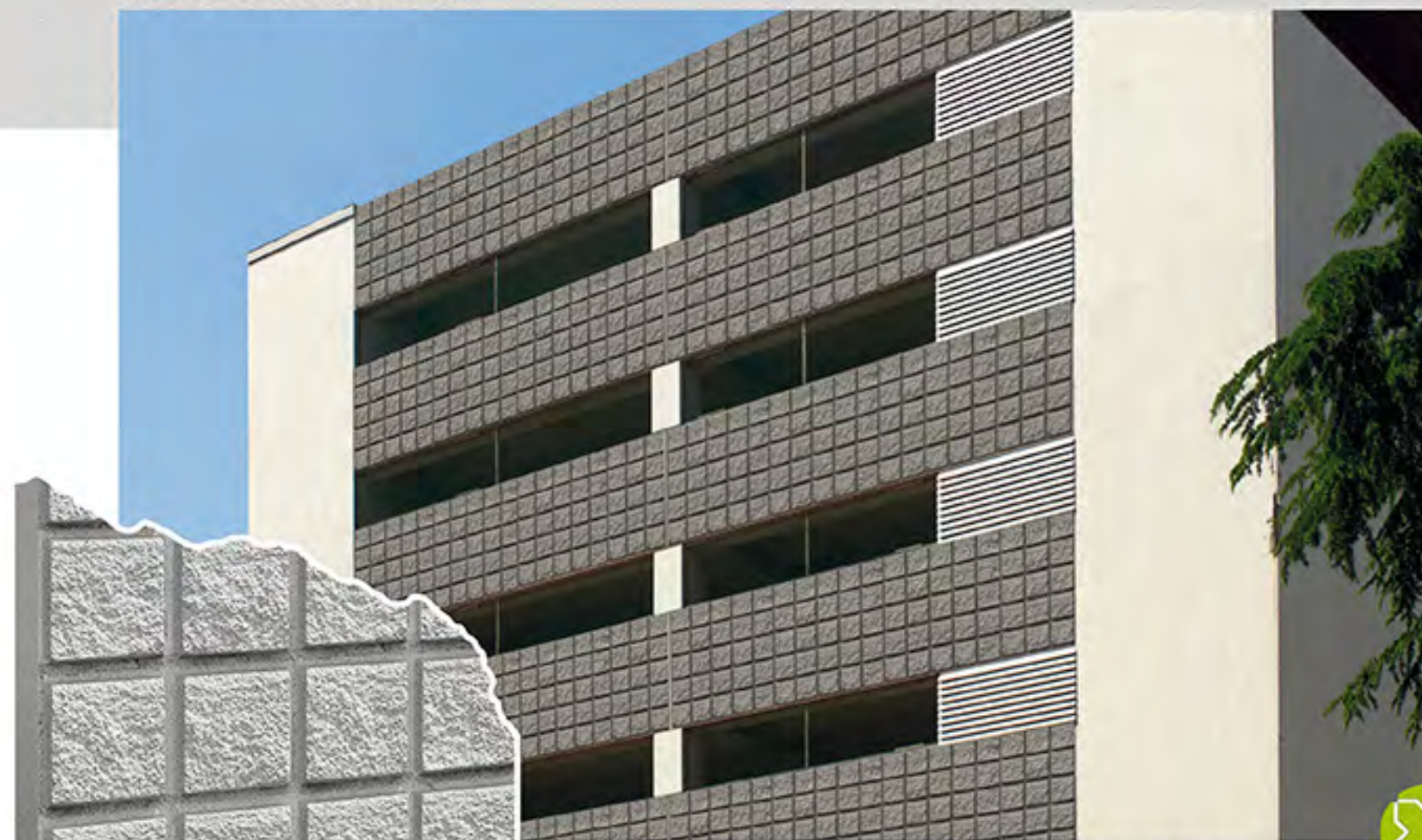


10 castings	Str\0302 - Prun	Dimensions L. 1.000 x H. 2.000 mm
50/100 castings	Fix\0302 - Prun	Dimensions L. 1.000 x H. 3.000 mm
100 castings	Esx\0302 - Prun	Dimensions on request





## 0401 Qubikstone



10 castings	Str\0401 - Qubikstone	Dimensions L. 1.000 x H. 1.000 mm
50/100 castings	Fix\0401 - Qubikstone	Dimensions L. 1.000 x H. 3.000 mm
100 castings	Esx\0401 - Qubikstone	Dimensions on request



## 0304 Qubik



10 castings	Str\0304 - Qubik	Dimensions L. 1.000 x H. 1.000 mm
50/100 castings	Fix\0304 - Qubik	Dimensions L. 1.000 x H. 3.000 mm
100 castings	Esx\0304 - Qubik	Dimensions on request





## 1301 Rigatello



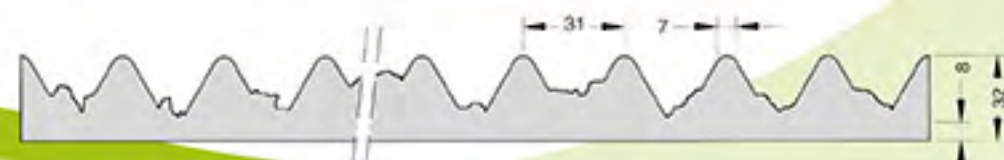
10 castings Str\1301 - Rigatello Dimensions L. 965 x H. 1.250 mm  
 50/100 castings Fix\1301 - Rigatello Dimensions L. 610 x H. 3.000 mm  
 100 castings Esx\1301 - Rigatello Dimensions on request



## 0209a Rigatino

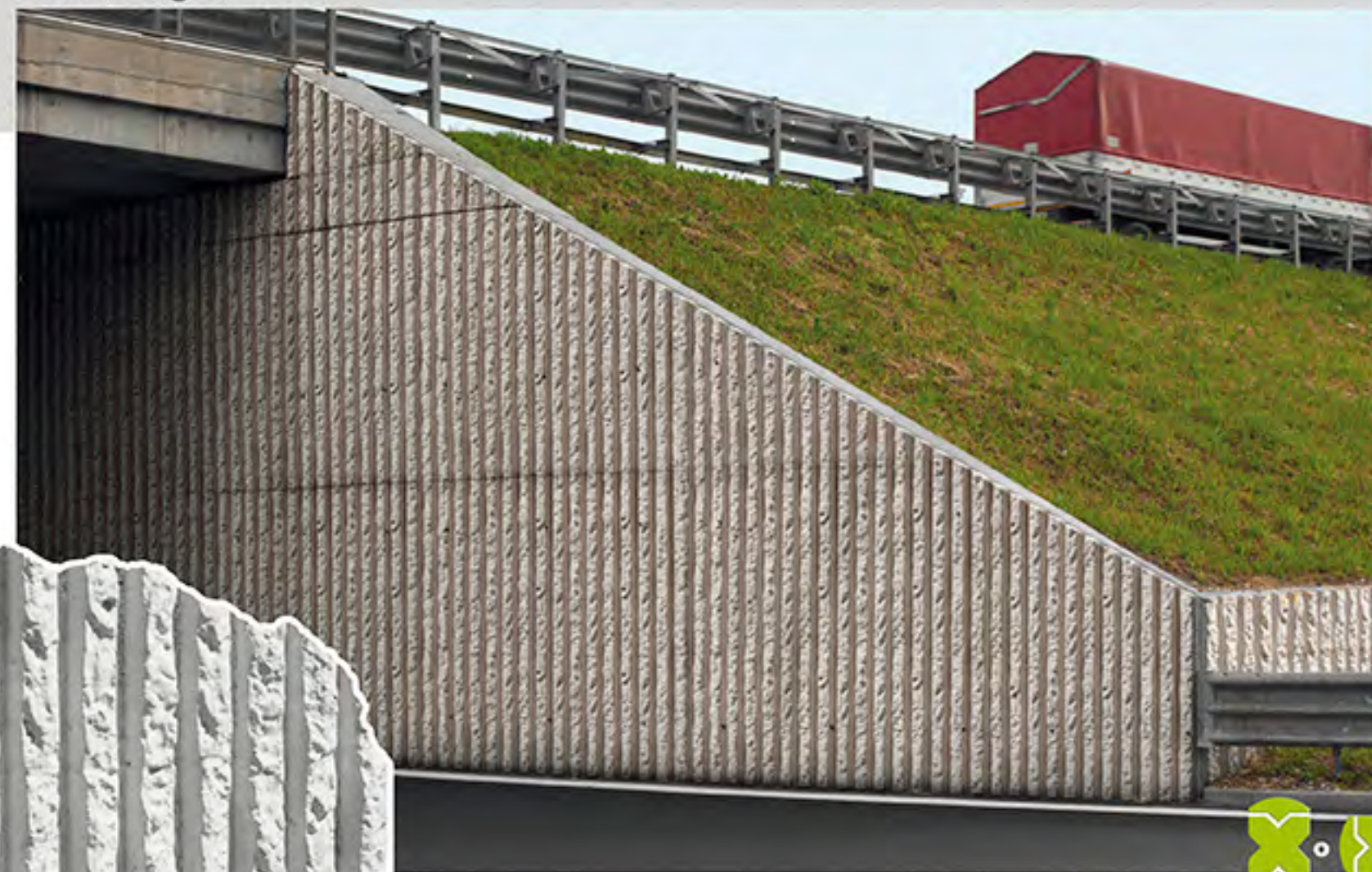


50/100 castings Fix\0209a - Rigatino Dimensions L. 620 x H. 3.000 mm  
 100 castings Esx\0209a - Rigatino Dimensions on request





## 0209 Rigato



50/100 castings  
100 castings

Fix\0209 - Rigato  
Esx\0209 - Rigato

Dimensions L. 510 x H. 3.000 mm  
Dimensions on request



## 0710 Rollgrip



10 castings  
50/100 castings  
100 castings

Str\0710 - Rollgrip  
Fix\0710 - Rollgrip  
Esx\0710 - Rollgrip

Dimensions L. 600 x H. 1.200 mm  
Dimensions L. 600 x H. 3.000 mm  
Dimensions on request





## 0510 Romantica



10 castings Str\0510 - Romantica Dimensions L. 1.000 x H. 1.000 mm  
 50/100 castings Fix\0510 - Romantica Dimensions L. 3.000 x H. 1.000 mm  
 100 castings Esx\0510 - Romantica Dimensions on request

10 - 35 130 - 510



## 0402 Rough



10 castings Str\0402 - Rough Dimensions L. 1.000 x H. 2.000 mm  
 50/100 castings Fix\0402 - Rough Dimensions L. 1.000 x H. 3.000 mm  
 100 castings Esx\0402 - Rough Dimensions on request





## 0207 Siena



10 castings Str\0207 - Siena Dimensions L. 1.000 x H. 1.000 mm  
 50/100 castings Fix\0207 - Siena Dimensions L. 3.000 x H. 1.000 mm  
 100 castings Esx\0207 - Siena Dimensions on request



## 0919 Stonewood



10 castings Str\0919 - Stonewood Dimensions L. 1.000 x H. 1.500 mm  
 50/100 castings Fix\0919 - Stonewood Dimensions L. 1.000 x H. 3.000 mm  
 100 castings Esx\0919 - Stonewood Dimensions on request





## 1000 Stresspaper



10 castings	Str\1000 - Stresspaper	Dimensions L. 1.000 x H. 1.500 mm
50/100 castings	Fix\1000 - Stresspaper	Dimensions L. 1.000 x H. 3.000 mm
100 castings	Esx\1000 - Stresspaper	Dimensions on request



## 0514 Strips



10 castings	Str\0514 - Strips	Dimensions L. 1.000 x H. 1.000 mm
50/100 castings	Fix\0514 - Strips	Dimensions L. 1.000 x H. 2.000 mm
100 castings	Esx\0514 - Strips	Dimensions on request





## 0406 Travertino



10 castings Str\0406 - Travertino Dimensioni L. 1.000 x H. 2.000 mm  
 50/100 castings Fix\0406 - Travertino Dimensioni L. 1.000 x H. 3.000 mm  
 100 castings Esx\0406 - Travertino Dimensioni a richiesta



## 0208 Vicenza



10 castings Str\0208 - Vicenza Dimensioni L. 1.000 x H. 1.000 mm  
 50/100 castings Fix\0208 - Vicenza Dimensioni L. 1.000 x H. 2.000 mm  
 100 castings Esx\0208 - Vicenza Dimensioni on request





## 0301 Woodline



10 castings	Str\0301 - Woodline	Dimensions L. 1.000 x H. 1.000 mm
50/100 castings	Fix\0301 - Woodline	Dimensions L. 3.000 x H. 1.000 mm
100 castings	Esx\0301 - Woodline	Dimensions on request



## Flex/Esseflex per colonna



Ø and patterns on demand.  
Suitable both for metal and plastic formworks.



## 0209 Rigato C



50/100 castings Flx\0209 - Rigato C  
100 castings Esx\0209 - Rigato C

Dimensioni L. 550 x H. 3.000 mm  
Dimensioni L. 1.100 x H. 3.000 mm o a richiesta



## 0001 Italia



100 castings Esx\0001 - Italia  
Dimensioni L. 3.000 x H. 14.500 mm





## Street furniture



Alternative street furniture applications.  
Planters, anti-intrusion planters, driveway plates and benches.

## Street furniture



Alternative street furniture applications.  
Planters, anti-intrusion planters, driveway plates and benches.



**mano**<sup>®</sup>  
concrete make up

**the only self-bearing form liner**

available in **Stonclear** and **flex** versions

**mano**<sup>®</sup>  
concrete make up

shaped panel for casting

patented<sup>®</sup>







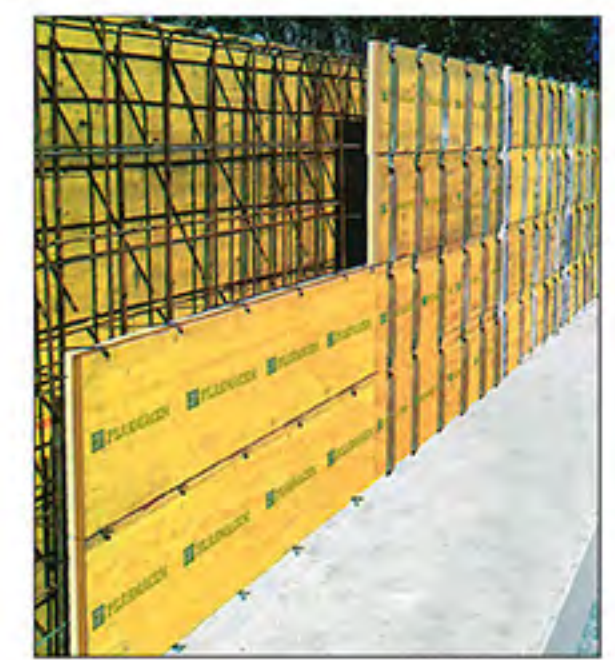
**mano** by Plasmacem

Created by welding resin-coated polyurethane directly onto the wooden panel for casting, the first and only shaped panel that allows you to obtain aesthetic finishes on concrete.

The panels are supplied in a size of 50 cm wide x cm 100/150/200/250 long. These dimensions make the panels easy to handle and to overlap.



The **mano** panel is supplied in four different finishes..



**mano** by Plasmacem

This innovative product is both practical and easy to handle, allowing you to considerably reduce reinforcement times since there is no need to worry about attaching the form liner to the panel. As well as allowing for at least 100 reuses, Mano can be regenerated by spreading the polyurethane again on the same wooden board, with significant savings, in keeping with due attention to environmental issues. This makes it very suitable for hire.



Str\0302 Prun



Str\0210 Ondulato



Str\0207 Siena

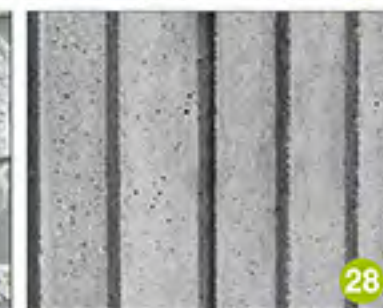
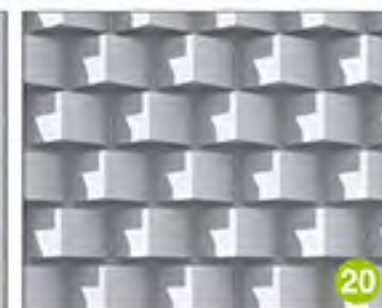
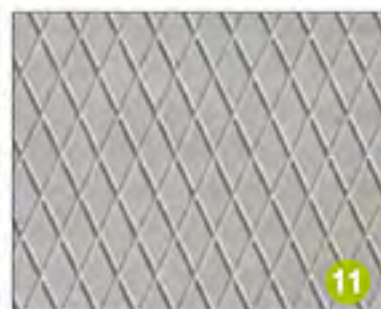


Str\0509 Blockstone



## INDEX

pag. 2	Form liners by Plasmacem	
pag. 3	Natural looking beautiful concrete	
pag. 4	Introduction to Esseflex, Flex	
pag. 5	Introduction to Stonclear, Mano	
pag. 6	Architectural concrete	
pag. 7	Useful information	
pag. 8-9	Warning	
pag. 10	Adda	cod. 0211
pag. 11	Antiskid	cod. 0162
pag. 12	Bark	cod. 0070
pag. 13	Beton	cod. 0710
pag. 14	Blockstone	cod. 0509
pag. 15	Brick	cod. 0101 (Svm)
pag. 16	Buomb	cod. 0883
pag. 17	Cannulato	cod. 0606
pag. 18	Diamond	cod. 0889
pag. 19	Drappo	cod. 0275
pag. 20	Dromb	cod. 0614
pag. 21	Dubai	cod. 0371
pag. 22	Floorgrip	cod. 0110
pag. 23	Graffiato	cod. 0407
pag. 24	Grecale	cod. 0176
pag. 25	Grecata	cod. 0303
pag. 26	Grecata B	cod. 0303
pag. 27	Istria	cod. 0559
pag. 28	Linear	cod. 0403
pag. 29	Linear 2	cod. 0404
pag. 30	Logik	cod. 920



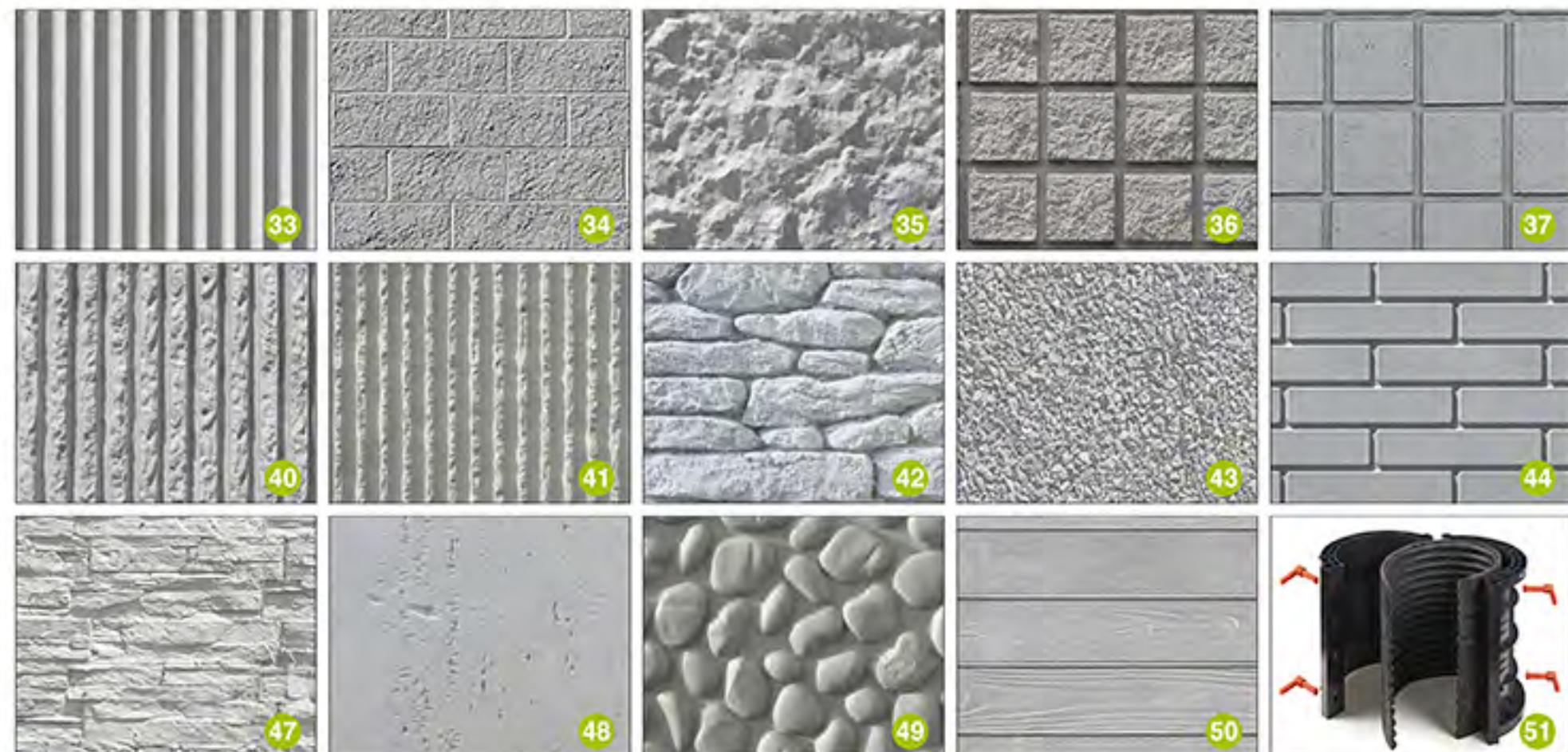
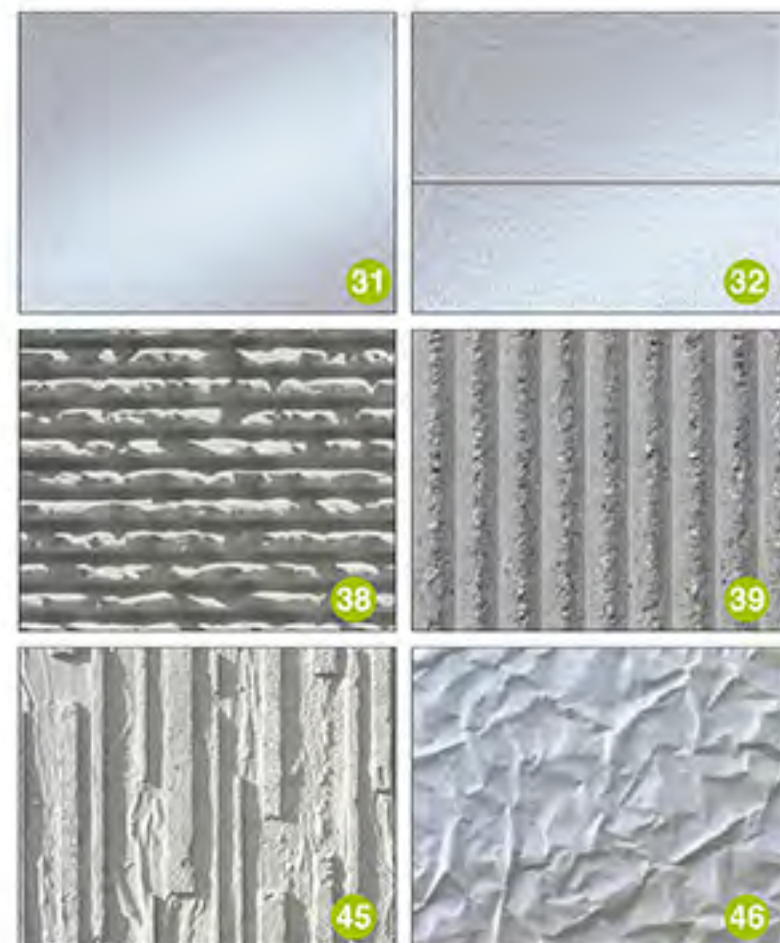
Drawings/patterns created on request.

The maximum dimensions of the form liners and the transversal sections are subject to change.



# INDEX

pag. 31	Mirror	cod. 0141
pag. 32	Mirror Strips	cod. 0151
pag. 33	Ondulato	cod. 0210
pag. 34	Pietraglia	cod. 0405
pag. 35	Prun	cod. 0302
pag. 36	Qubikstone	cod. 0401
pag. 37	Qubik	cod. 0304
pag. 38	Rigatello	cod. 1301
pag. 39	Rigatino	cod. 0209a
pag. 40	Rigato	cod. 0209
pag. 41	Rollgrip	cod. 0710
pag. 42	Romantica	cod. 0510
pag. 43	Rough	cod. 0402
pag. 44	Siena	cod.0207
pag. 45	Stonewood	cod. 0919
pag. 46	Stresspaper	cod. 1000
pag. 47	Strips	cod. 0514
pag. 48	Travertino	cod. 0406
pag. 49	Vicenza	cod. 0208
pag. 50	Woodline	cod. 0301
pag. 51	Flex Colonne	
pag. 52	Rigato C	cod. 0209
pag. 53	Italia	cod. 0001
pag. 54	Street furniture	
pag. 56	Mano	
pag. 60	Index	



**Drawings/patterns created on request.**  
**The maximum dimensions of the form liners and the transversal sections are subject to change.**



authorized dealer



**PLASMACEM**

NATURAL LOOKING BEAUTIFUL CONCRETE

**REKREO SRLS**

Via Valeggio sul Mincio, 8 - 36100 Vicenza (VI) Italy

Tel. +39 0444 546968 Fax +39 0444 1830461

info@rekreo.it - www.plasmacem.com