



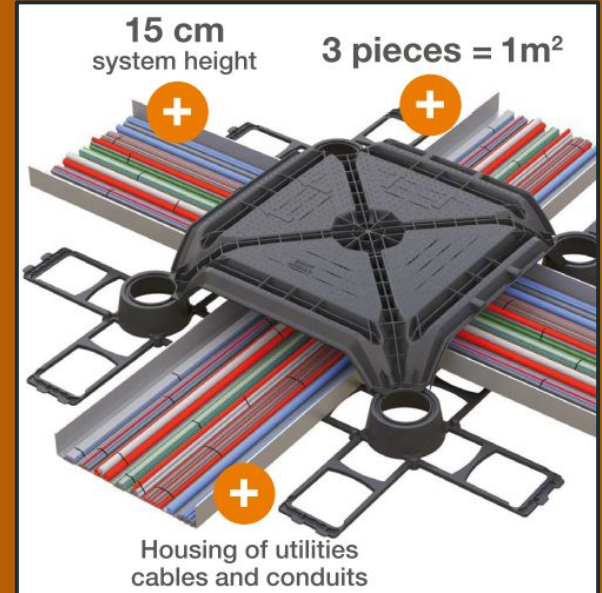
Geoplast
Building beyond together

MATRIX

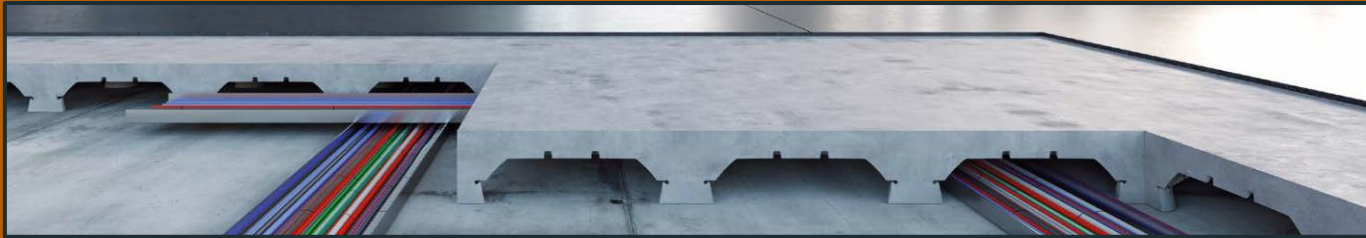
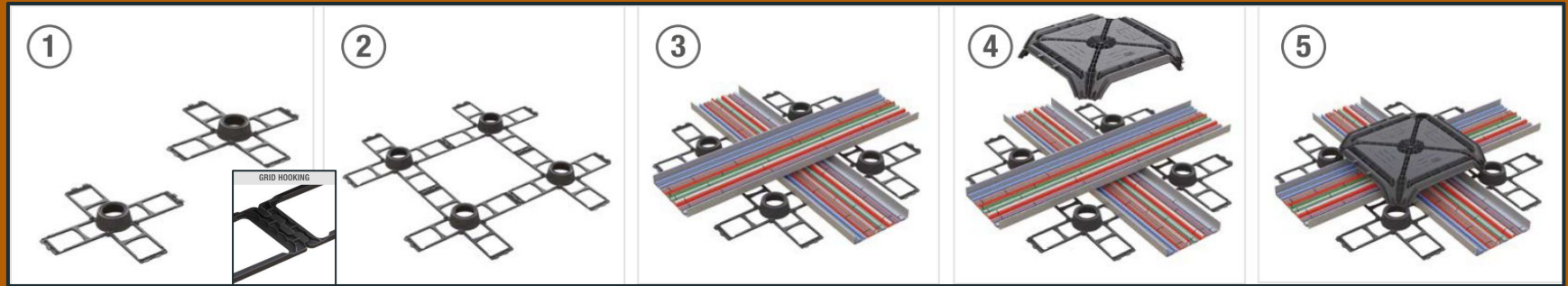
CONCRETE FLOATING
FLOOR



MATRIX - concrete floating floor with MEP systems



MATRIX - INSTALLATION STEPS



MATRIX vs CLASSIC FLOATING FLOOR

FIRE RESISTANT

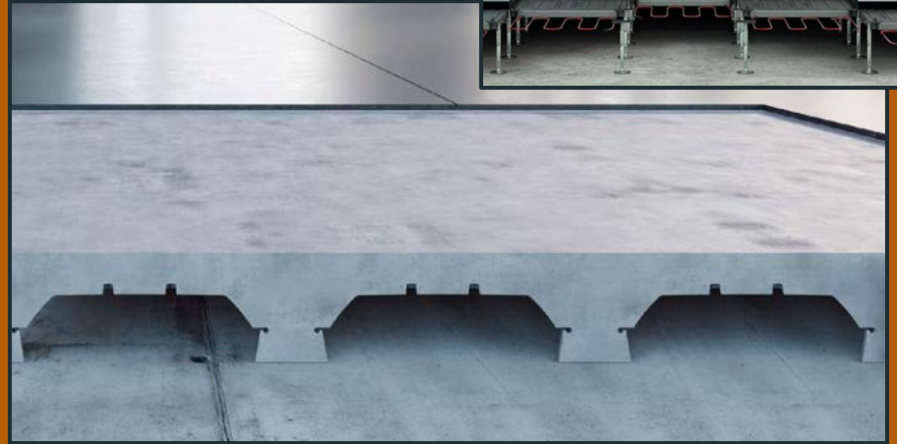


The monolithic concrete casting above the MATRIX system, allows to completely isolate the flooring and the MEP from possible internal fires.

LOAD BEARING CAPACITY



The MATRIX concrete slab has a load bearing capacity up to 15 T/m² for heavy load vehicles passage; the product is walkable during installation.



Other characteristics

ACCESSIBLE COMPARTMENT

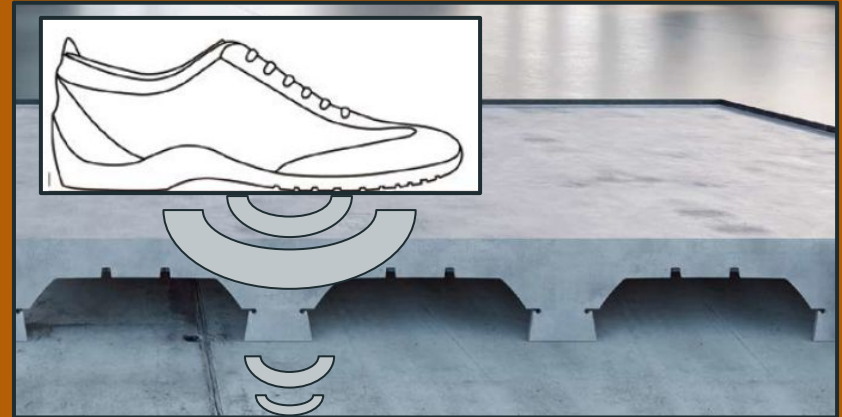


MATRIX allows the creation of on-site inspection wells for the technical compartment access. The wells allow the installation of the main cable boxes available on the market.

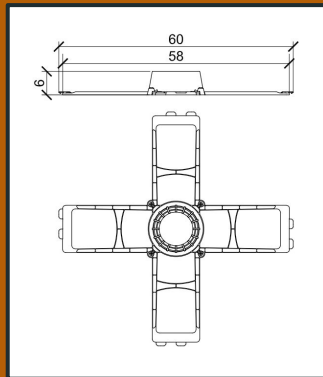
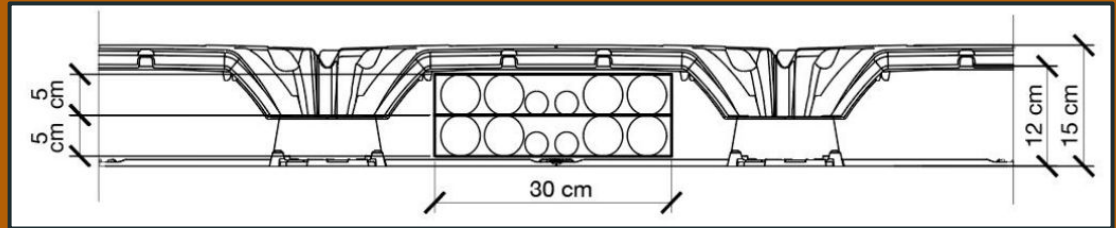
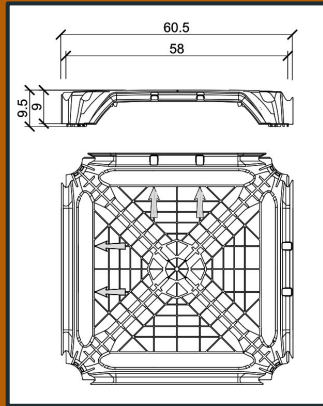
EXCELLENT ACOUSTIC



Elimination of footsteps and rumble sound compared to traditional floating floors that are known to be affected by the reverberation of the underlying metal structure.



MATRIX Technical data sheets



CARICO (Kg/m ²)	SPESSORE SOLETTA (cm)	ARMATURA (mm)
500	4	Ø6 / 20x20
1.000	5	Ø6 / 20x20
2.500	7	Ø8 / 20x20
5.000	8	Ø10 / 20x20
10.000	10	Ø12 / 20x20
>10.000	Da valutare caso per caso interpellando l'ufficio tecnico Geoplast	

Passaggio impianti	N°	Dimensioni
	1	Ø 40cm x 6cm
	2	Ø 30cm x 5cm

DESIGN & ASSISTANCE

Contact: Ing.Camera Tommaso - mob. 054-2118400 - tommaso@geoplast.co.it
Additional support material (BIM files, calculation tools, research papers)
available at: www.GeoplastGlobal.com

Geoplas Technical Unit is at the disposal of architects and engineers to offer the required assistance during the implementation of a project, from the statistical calculation to the working drawings



On-site assistance

Geoplast's technical unit can be present on-site and help the company during the installation stage.



Executive design

Support by design professionals. The in-depth analysis together with the framework positioning plan and the related accessories can be supplied on request



Technical Analysis

Structural Analysis of all the documentation that tests the performance of the proposed systems



Feasibility analysis

Technical Analysis of the project which include the choice of the most suitable Geoplast's solution, material and manpower estimate and cost analysis